

579:581.526.323 (262.5)

99011 , . . . , 2,

CHRYS MOEBA RADIANS KLEBS 1893 (CHRYSOPHYTA)

()

Chrys moeba radians Klebs (*Chrysophyta*),

, *Chrysophyta*, *Chrys moeba*,

285

(, , 2000). *Chrys moeba* Klebs 1892

Chrysophyta, *Chrys moeba* (, 2006).
Chrys moeba radians Klebs -

(- , 1992),

2000 .(, , 2002).

(, 2006).

Ch. radians

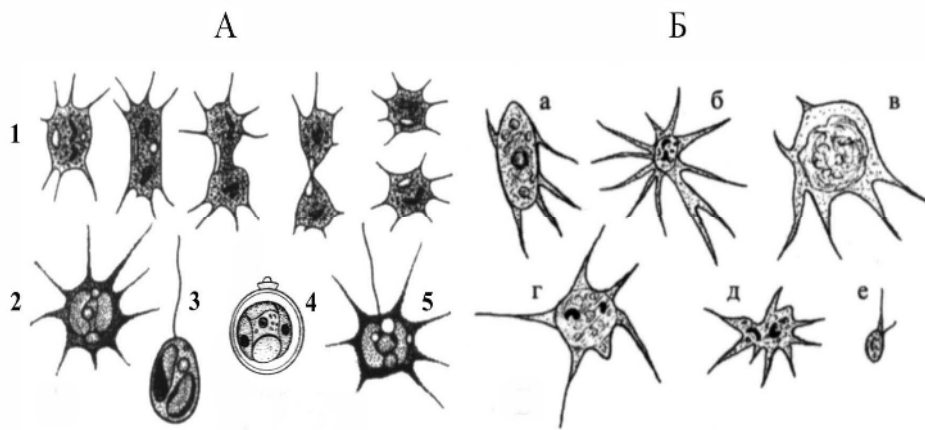
1999-2002 .
 0,5 ,
 7,6 22 °C, - 9 22 ,
 17-18 ‰ (, ,
 2002). 2005 2007 .
 (.).
 « -212»

Chrys moeba radians Klebs,

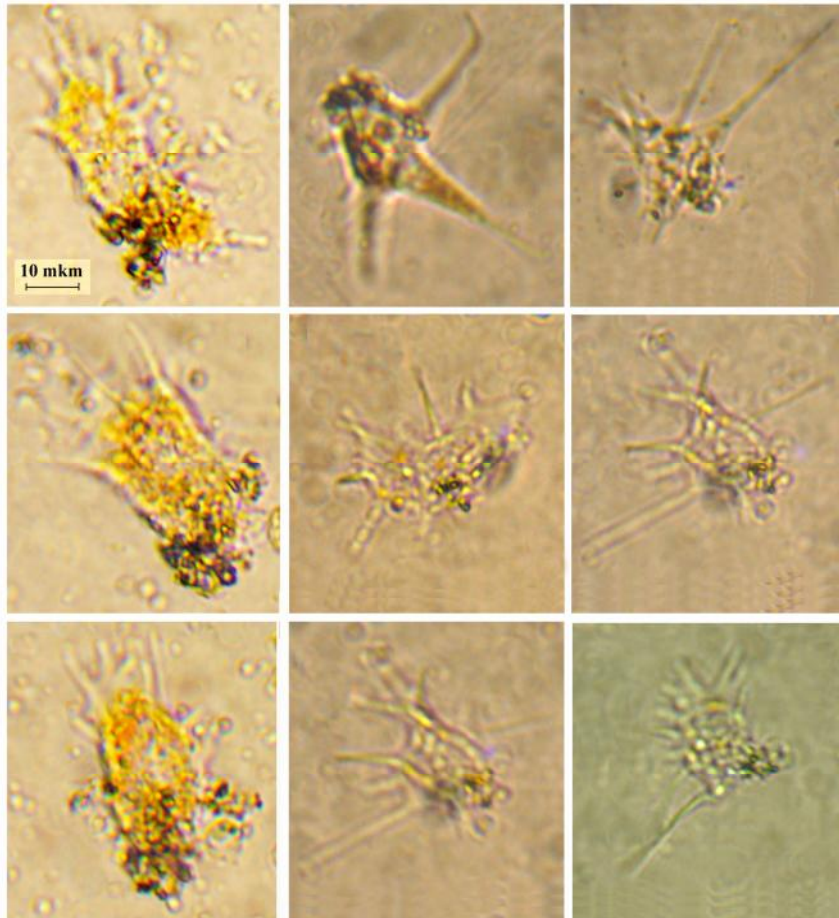
	0 ,					
					-	
27 2000 .	13,0	39,4	28,0	-	8 - 11	-
-«-	-«-	22,4	16,8	-	9-11	-
18 2001 .	7,6	-	-	28,0	5 - 7	-
27 2006 .	22,0	31,5	18,9	16,5	9-12	12,6
26 2007 .	22,0	30,0	18,0	18,0	9	-
19 2007 .	20,0	30,0	18,0	18,0	9	24,0
26 2007 .	18,0	36,0	16,0	12,0	9-11	17,0
-«-	-«-	18*	12,0	-«-	11	5-16
-«-	-«-	14*	12,0	-«-	9	5-24
23 2007 .	12,0	-	-	10,0	8	17,0
* _						

(., 2001)
Chrys moeba radians (, , 2002).

0,5 .
 2006 2007 . (.) .
 7,6-
 22,0 °C.
Ch. radians.
 « »
 (, 1977). . 1,
 27 2000 . 18 2001 .
Ch. radians
 (. 1, 2).
 2007 .
 (. 2,)
 2007 . (. 2, ,) .



. 1. *Chrysamoeba radians*. – , 1954, 1977: 1 – ; 2 – ; 3-5 – ; 4 – , 2003: – ; –



2. *Chrysamoeba radians*,
(- , - 2007)

Ch. radians,

: 22,4-39,4 , 12-28 , 10 28 , 5-
12 (.).

(Klebs, 1893)

12-15

Ch. radians (. 1,)

8-10 (, 1954);

18 11

(., 1953).

(Hibberd, 1971),

Ch. radians,

1970 . ,

().

: 6-10 , 6-15 20-35 ., 0,2 .,

6,5-7,5 ; 10-13 .

4-6 .

: -

8 3,5 , 8-10 3-4

10-20 ., 7 (Tsukii, 2003).

.

(. 1 , I),

(. 2, B).

Ch. radians (. 1 ,).

.

(. 1 , ,).

,

(. 2, B).

Chrys moeba -

,

,

,

,

(, 1954, 1977; Hibberd, 1971; , 1984). -

-

;

(, 1995).

- -

: $s = 0, x = 1, o = 8, = 1, l = 4, S = 1$ (, 1977).

Ch. radians

.

,

,

.

9

,

.. (, 2003). *Chrys moeba*

(, , 1974),

-

Chrys moeba radians Klebs

L.I. Ryabushko, R.I. Lee

A.O. Kovalevsky Institute of Biology of Southern Seas, National Academy of Sciences of Ukraine,
2, Nakhimov Pr., 99011 Sevastopol, Crimea, Ukraine

CHRYS MOEBA RADIANS KLEBS 1893 (*CHRYSOPHYTA*) IN THE
MICROPHYTOBENTHOS SHALLOW WATERS OF THE BLACK SEA (UKRAINE)

Information on biology, morphology and ecology of golden alga *Chrys moeba radians* Klebs (*Chrysophyta*) discovered on microphytobenthos on stone of the Black Sea at shores of Crimea is considered. The photomicrographs of alive cells of the Black sea populations of this species are first resulted.

Key words: golden alga, microphytobenthos, *Chrysophyta*, *Chrys moeba*, the Black Sea.

... , 1974. – 256 .

... //

Chrysophyta. – ... – 2000. – **10**, 4. – . 84-93.

... , 1953. – 390 . – [...

... 1.]

... , 1954. – 188 . – [...

... 3.]

... (*Chrysophyta*) // ... 3. – ...

... , 1977. – . 100-110.

... //

... – 1995. – **5**, 2. – . 204-209.

« ... » // ... – 1992. – **2**, 3. – . 73-86.

... .. // I ' . . . - (i , 25-27 2001). - . 336-337. . . . : « - », 2003. - 288 : « - », 2006. - 143 *Chrys moeba* Klebs. // . . - 2002. - . 62. - . 19. . . . : ., 1984. - 333 3. . 1. . . : , 1977. - . 11-42. *Hibberd D.J.* Observations on the cytology and ultrastructure of *Chryamoeba radians* Klebs (*Chrysophyceae*) // Brit. Phycol. - 1971. - 6. - P. 207-223. *Klebs G.A.* Flagellatenstudien. II // Z. Wiss. Zool. - 1893. - 55. - S. 353-445. *Tsukii Y.* 2003 <http://protist.i.hosei.ac.jp/PDB/Images/Heterokontophyta/Cryamoeba/index.html>.

07.09.07